



Creative
environments

ENVIRONMENTAL POLICY



ONE Creative environments (ONE) takes a responsible interest in the environmental impact of its business activities, and aims to contribute to environmental improvement and sustainable development.

We are committed to having a positive impact on the environment by producing environmentally conscious, innovative designs and preventing pollution. In the day to day running of our business we seek continual improvement and refinement in our procedures and practices. In particular ONE will:

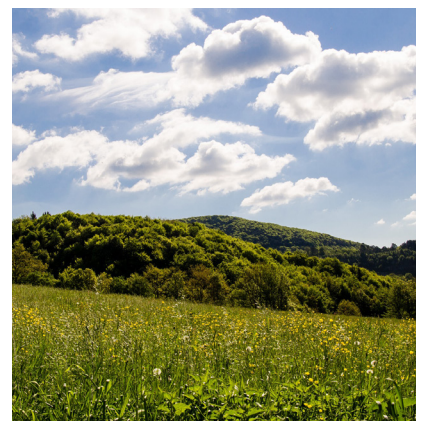
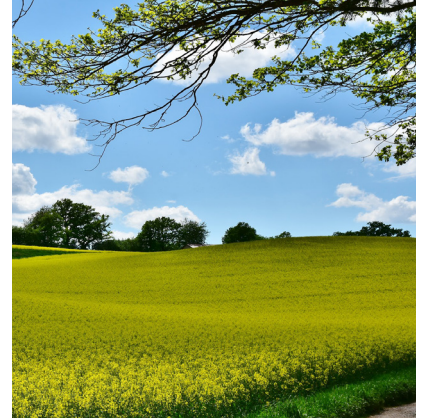
Aim to:

“Have a positive impact on the environment with the way that we run our business and with the environments that we design.”

As part of this ONE will:

- Comply with all relevant legislative and other requirements and where appropriate, exceed or supplement these by setting our own exacting standards.
- Seek to reduce consumption of materials in our operations, reduce and reuse rather than dispose. Whenever possible promote the practice of recycling and the use of recycled materials.
- Maintaining an environmental management system that meets the requirements of BS EN ISO 14001:2015 as well as BS EN ISO 9001:2015.
- Where ever possible instigate and promote design and energy efficiency into new services, buildings and equipment and manage accordingly.
- Work in partnership with our suppliers, customers and other design disciplines to minimise the impact of our operations on the environment.
- Work with external groups and organisations to promote the concepts and beneficial practices of environmental protection.

We welcome the ideas and initiatives of our employees so that our environmental performance can be improved. Our policy and environmental objectives and targets will be formally reviewed annually, or as significant change occurs, whichever is more frequent or appropriate.



(This policy is contained within ONE's EMS Manual.)